



The Graphic Design and Commissioning Tool for Home & Building Automation: Optimizing your Productivity Has Never Been Easier

eConfigure KNX 2.0

se.com



Life Is On

Schneider
Electric

Table of contents

Solution overview

1

Graphical design

2

On-site commissioning

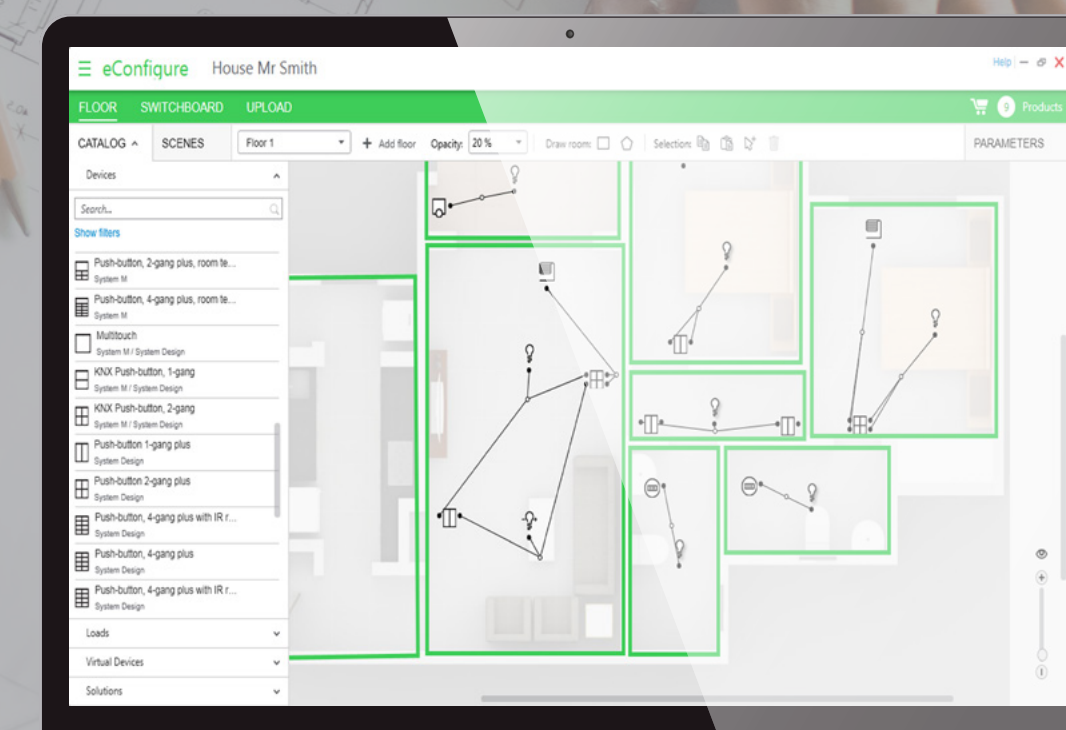
3

End-user comfort and efficiency

4

Schneider Electric support

5



Solution overview

Automation solutions made easy

Time savings, easy-to-use, and risk free

The **eConfigure KNX 2.0** by Schneider Electric is the easiest tool for all your design and commissioning of automation solutions.

eConfigure KNX 2.0 combines the work of KNX wired and Zigbee wireless devices: in one single user interface, connect them seamlessly together and allow control in both direction.

It gives you the capability to design and commission your automation installations for lighting, shutters, blinds, and temperature control for your residential projects (villas, chalets) and small & medium commercial buildings (offices, schools, stores, restaurants, etc.)

Grab new business opportunities without risks with a simplified and optimized solution for smart homes and smart buildings.

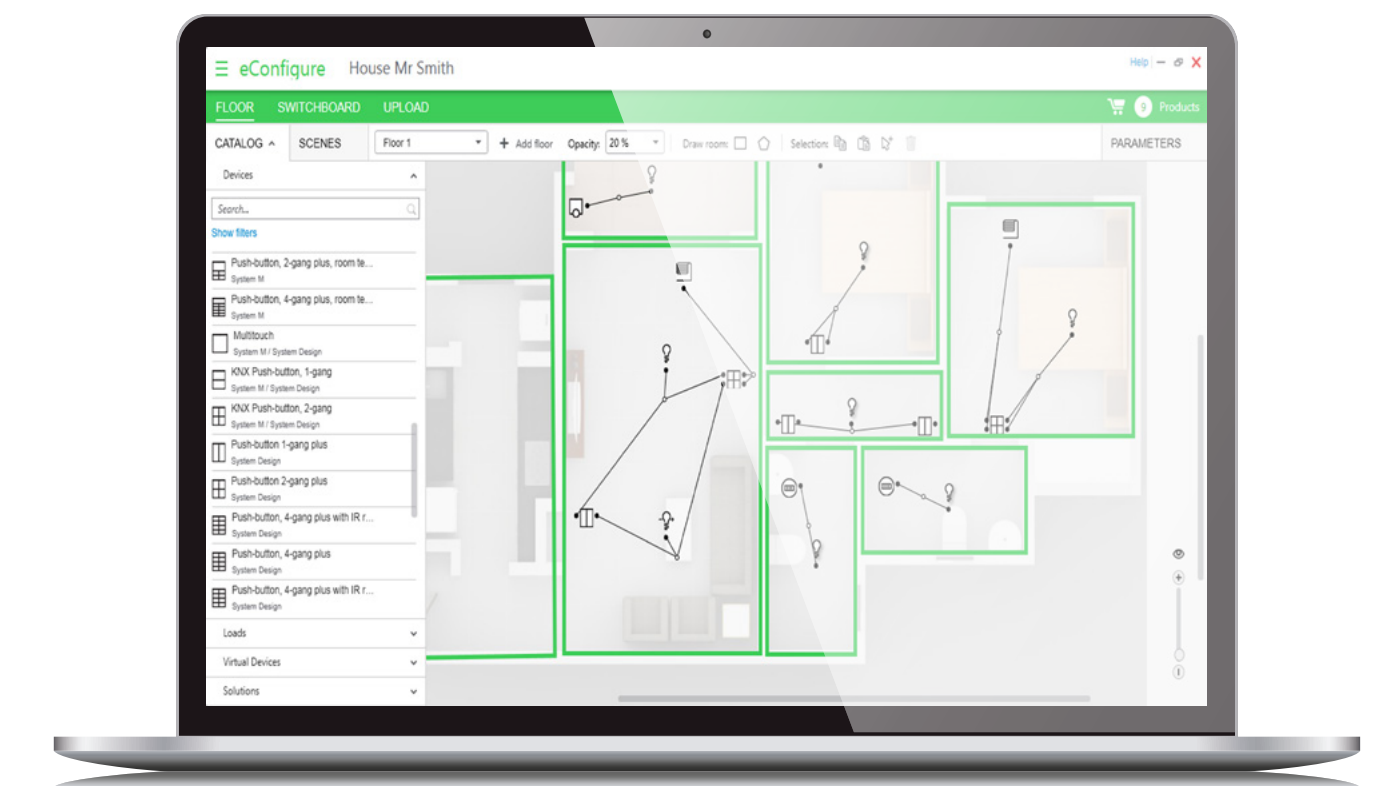


A simplified and optimized solution

For smart homes and smart buildings

From design to installation and maintenance, eConfigure KNX 2.0 can be used by system integrators and installers: Click, move, drop - no programming!

- **Time Savings** Create your own library of solutions and reuse across your projects
- **Reliable** You can only link products and loads that are relevant: no mistakes!
- **Quality** The diagnosis page helps the partner to identify devices of your network and detect configuration inconsistencies
- **Peace Of Mind** KNX is the most used and reliable protocol in Home and Building Automation
- **Flexible** Integrate devices from different open protocols: KNX, Zigbee, DALI
- **Customizable** Allows Partners to import floor plans and place graphically devices on it



Graphical design

A fast, easy to use and intuitive software

Floor Plan Design

eConfigure KNX 2.0 works the way you work.

- Drag and drop the devices and link them together. Select the function you want to apply and it's done!
- Save the most common functions as a solution in your catalog in order to use them later for future projects
- Make visual proposals and recommendations: Easy to understand for your customers

Switchboard Design

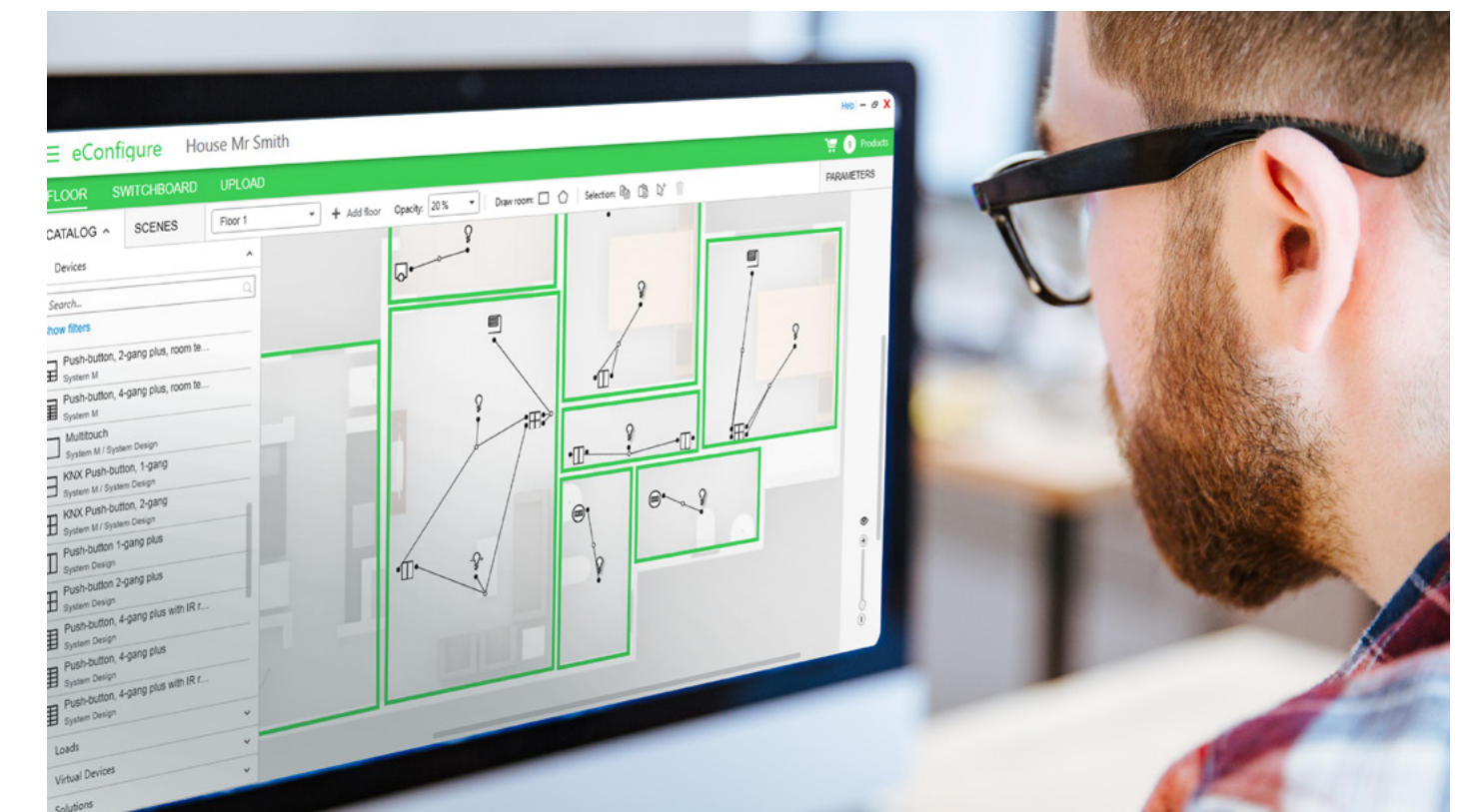
eConfigure KNX 2.0 automatically generates the best actuators for each situation in just one click.

- Avoid mistakes
- Save time: it generates the actuators in just one click
- Design your switchboard quickly and easily

Device Library

eConfigure KNX 2.0 has its own updated library of devices.

- No need to download devices from the web
- Design configurations quickly and easily



Design your solutions once Use them endlessly

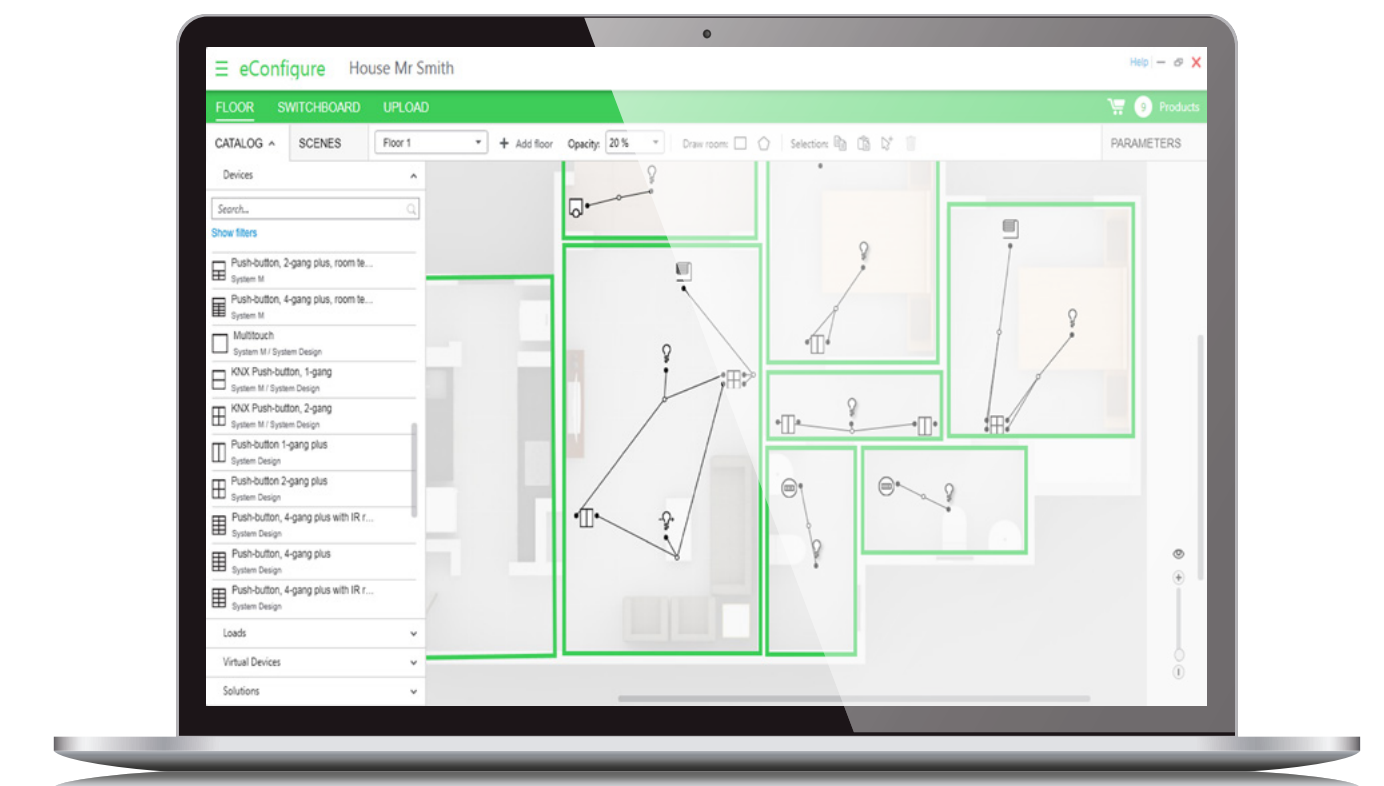
Solutions Catalog

- Export solutions to share with stakeholders
- Increase efficiency and profitability by saving your solutions to reuse them on future projects if needed

Scenes

eConfigure KNX 2.0 lets you create scenes.

- Control one device or a group of devices in just one click
- Save time and speed configurations



On-site commissioning

Control everything

Flexible Commissioning

- Configure devices quickly and easily
- Ensure commissioning, maintenance and troubleshooting

Bill of Materials and Reports

eConfigure KNX 2.0 allows you to create and edit a professional bill of materials for all stakeholders - specifier, architect, and end-user.



End-user comfort and efficiency

Solution overview

Graphical design

On-site
commissioning

End-user comfort
and efficiency

Schneider Electric
support



User comfort and efficiency

eConfigure KNX 2.0 delivers your customer a widget based visualisation and the Wiser KNX app: they can control their installation at their convenience.

Paired with Wiser for KNX and spaceLYnk logic controllers, your customers can control all installations.

They can:

- Manage room lighting, shutters, blinds and temperature.
- Access controls via their personal smartphone, tablet or PC anytime and anywhere.



Schneider Electric Support

Schneider Electric & your KNX installations

Schneider Electric is a global specialist in **energy management and automation**.

Our 160,000+ employees serve customers in more than 100 countries, helping them to manage their energy and process in ways that are **safe, reliable, efficient, and sustainable**.

We are leaders in **building management systems**, including innovative automation solutions for homes and small buildings.



Life Is On



To learn more about eConfigure KNX Lite, visit se.com where you can also find contact information for your local Schneider Electric representative.

se.com



Schneider Electric Industries SAS

35, rue Joseph Monier—CS 30323
F92506 Rueil-Malmaison Cedex, France
se.com

